

SAFER CHOICE PARTNERS' WHAT-IFS EXPLAINED

- ? What if an ingredient in your product formulation does not meet Safer Choice Criteria?
✓ Finding a replacement ingredient can be fairly simple with resources like CleanGredients and the EPA SCIL, in addition to working with ToxServices and your chemical manufacturer.
- ? What if your audit results in items that require corrective actions?
✓ Prepare a corrective action plan addressing the action items identified during your audit. Submit your plan to ToxServices for review and preparation of a corrective action memo.
- ? What if you miss an important audit or renewal date in your Safer Choice partnership?
✓ Contact both ToxServices and Safer Choice with a proposed timeline of submission and completion to remain in compliance with your partnership agreement.
- ? What if you would like to make a change to a Safer Choice recognized product?
✓ Reformulations can be submitted to ToxServices through the Safer Choice Community. Product name changes, packaging, or label updates can be submitted directly through ToxServices for evaluation.

FOR MORE INFORMATION, PLEASE CONTACT:

ToxServices LLC
Erica Harriman

Safer Choice Program Manager
1367 Connecticut Ave, N.W., Suite 300
Washington, D.C. 20036
Phone: 202-429-8789
Fax: 202-429-8788
Email: eharriman@toxservices.com

Margaret H. Whittaker
Ph.D., M.P.H., CBIol., F.R.S.B., E.R.T., D.A.B.T.

Managing Director & Chief Toxicologist
1367 Connecticut Ave, N.W., Suite 300
Washington, D.C. 20036
Phone: 202-429-8787



MISSION STATEMENT

TO BENEFIT OUR CLIENTS BY RESOLVING COMPLEX HUMAN HEALTH AND ENVIRONMENTAL ISSUES THROUGH THE APPLICATION OF SOUND SCIENCE, RISK ASSESSMENT AND THE PRINCIPLES OF ENVIRONMENTAL SUSTAINABILITY AND TO CONTINUE TO EVOLVE AND EXPAND SERVICES AS ENVIRONMENTAL AND HUMAN HEALTH

TOXSERVICES
TOXICOLOGY RISK ASSESSMENT CONSULTING

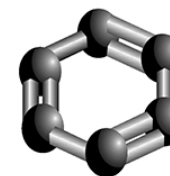
TIPS TOWARD SAFER CHOICE SUCCESS

POTENTIAL WHAT-IFS EXPLAINED,
PROGRAM BASICS, UTILIZING THE SAFER
CHOICE COMMUNITY & AUDIT READINESS



TOXSERVICES PARTNERS WITH THE U.S. ENVIRONMENTAL PROTECTION AGENCY'S SAFER CHOICE PROGRAM AS A THIRD-PARTY PROFILER TO EVALUATE A WIDE RANGE OF CLEANING, HOUSEHOLD, AND PERSONAL CARE PRODUCTS FOR SAFER CHOICE RECOGNITION.

THANK YOU FOR ATTENDING
PLEASE SEE REVERSE FOR CONTACT INFORMATION



WWW.TOXSERVICES.COM

BACK TO BASICS

ANNUAL MILESTONES



BE SURE TO REMEMBER

SAFER CHOICE CRITERIA ENDPOINTS	TYPICAL DOCUMENTATION SUBMITTED DURING INITIAL REVIEW OR RENEWAL
Product Formulation	Page 5 of ToxServices' Product Submission Form or Safer Choice Community
Ingredient MSDS	Manufacturer prepared MSDS or SDS for each ingredient
Safer Choice Logo Use	Draft product label, in all product sizes, with proposed Safer Choice logo use
Ingredient Disclosure	Product label with listing of ingredients or listing of URL where ingredients are found
Endorsement Disclaimer	Safer Choice Endorsement Disclaimer present on product or company website
Performance	Performance test report performed in accordance with criteria for the product class specified in the Safer Choice Standard
Primary Packaging	Packaging template provided by ToxServices
Flammability	Page 2 of ToxServices' Product Submission Form or Safer Choice Community
pH	Page 2 of ToxServices' Product Submission Form or Safer Choice Community
End User Education*	Product Safety Data Sheet

*Mandatory for Industrial Institutional (I/I) Products only



Helpful Resources for the Safer Choice Program:

WWW.TOXSERVICES.COM/SERVICES/USEPA

WWW.EPA.GOV/SAFERCHOICE/

[RESOURCES-SAFER-CHOICE-PRODUCT-MANUFACTURERS](#)

WHY AND HOW? THE BENEFITS OF SUBMITTING THROUGH THE SAFER CHOICE COMMUNITY

PROS OF SUBMITTING

PROJECT TRACKING

e.g., DATES SUBMITTED TO TOXSERVICES & SCP

PRODUCT RECOGNITION STATUS

e.g., RECOGNIZED PRODUCTS, RECOGNITION DATES, & TIME OF NEXT RENEWAL

AUTOMATED AUDIT & RENEWAL DUE DATE REMINDERS

TIPS WHEN SUBMITTING

DISCLOSE ALL LAYERS OF YOUR SUPPLY CHAIN FOR MORE EFFICIENT DATA COLLECTION

SELECT THE APPROPRIATE REVIEW TYPE
e.g., INITIAL, REFORMULATION, RENEWAL

DOCUMENTATION IS REQUIRED FOR SUBMISSION
BE SURE TO HAVE IT READY!

USE THE NOTES SECTION!
RELAY IMPORTANT INFORMATION TO TOXSERVICES
e.g., INGREDIENT DISCLOSURE METHODOLOGY

ASK TOXSERVICES OR SAFER CHOICE FOR "GETTING STARTED: USER GUIDE FOR THE SAFER CHOICE COMMUNITY"

Don't have access to the Community?
Contact ToxServices!

AUDITS! AUDITS! DON'T FORGET ABOUT AUDITS!

WHEN AM I DUE?

- Audits are due on an annual basis based on the signatory date of your partnership agreement with Safer Choice
- Please note if multiple facilities produce a recognized product, two sites will be selected for an audit once per three-year partnership agreement
- All products currently recognized are under review

WHAT DO I DO?

- Contact ToxServices for audit submission form, as submission is not through the Safer Choice Community at this time
- Schedule on-site audit with ToxServices or submit your documentation for desk audit review
- Prepare documentation for submission e.g., batch records, certificates of analysis, documentation from ingredient manufacturers that composition has not changed

PLEASE CHECK YOUR PARTNERSHIP AGREEMENT & BE ON THE LOOKOUT FOR COMMUNITY REMINDERS!